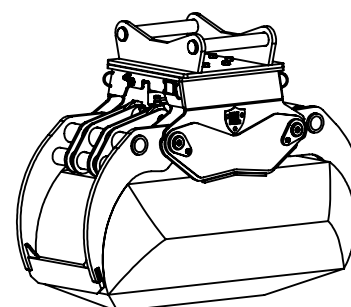
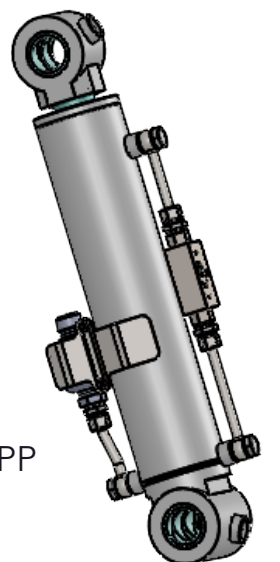


Bore Ø: 116mm
Bore Ø: 102mm
Rod Ø: 56mm
Closed Centres: 650.10mm
Stroke: 350mm
Ports: G 1/2" BSPP

Hose Size: 1/2" R2AT

Pressure Relief Valve: 1/2" BSPP
100x100-bar set pressure

Accumulator: Pre-charged 80bar



Capacity: 750lt

SAE J2574:2019



Part No : 200-TG	Rev: 8
Machine Class : 17-24 Tonne	18/07/2023
Product : Timber Grab	
Weight : 719 kg	

This drawing is the sole property of Hardlife (UK) Ltd.

	S355		HB400		HB500
	EN8		HB450		CAST ALLOY