

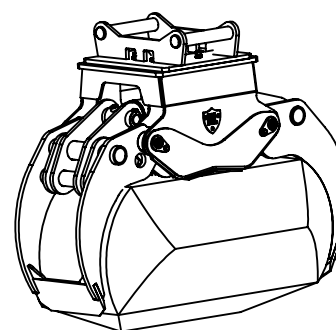
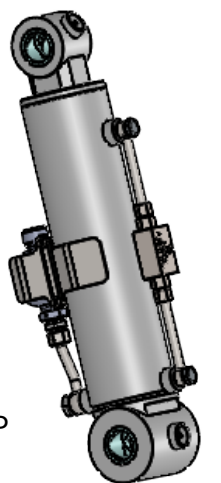
CYLINDER:

Barrel Ø: 115mm
Bore Ø: 103mm
Rod Ø: 50mm
Closed Length: 537.00mm
Stroke: 245mm
Ports: G3/8" BSP

Hose Size: 3/8" R2AT

Pressure Relief Valve: 3/8" BSP
@100x100-bar set pressure

Accumulator: Pre-charged 80 bar



Capacity: 345lt

SAE J2574:2019



Part No : 060-TG	Rev: 8
Machine Class : 6-9 Tonne	17/07/2023
Product : Timber Grapple	
Weight : 347 kg	

This drawing is the sole property of Hardlife (UK) Ltd.

S355	HB400	HB500
EN8	HB450	CAST ALLOY